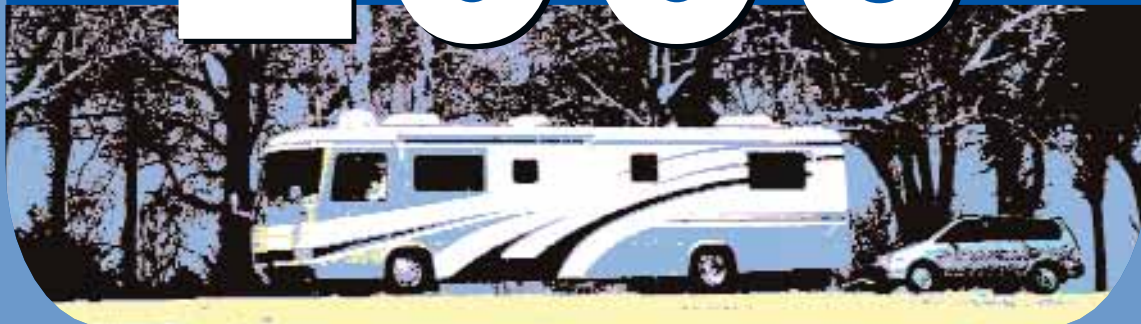


# TOWABLES FOR 2005



A guide to 2005-model-year vehicles that manufacturers have indicated can be recreationally towed behind motorhomes without significant modifications.



Hummer H3



Land Rover Range Rover



GMC Canyon



Suzuki Aerio SX



Infiniti G35 Coupe

*The following information is intended to help motorhome owners select a vehicle that is approved by its manufacturer for flat towing. The information was gathered from automobile manufacturers and pertains only to model-year-2005 vehicles. The information may or may not be correct for earlier or later models. While every attempt has been made to present accurate information, keep in mind that continued vehicle improvements and production-line changes could alter the information and render it out-of-date.*

This year's list of vehicles that can be towed four wheels down includes the addition of several new models and the return of two manufacturers. Mitsubishi, which was not included in the 2003 and 2004 lists, is back with three models: Eclipse, Lancer, and Outlander. Kia also returns after a two-year absence with two-wheel-drive and four-wheel-drive versions of the Sorento. Chevrolet has added two cars, Aveo and Cobalt, to take the place of the Cavalier, which will be retired after this year. GMC introduced a new small truck, the four-wheel-drive Canyon. Hummer will roll out a pair of 2006 models this year to join the H2/H2 SUT on the towables list. The H1 Alpha replaces the original H1, but has a significant curb weight that many motorhomes will not be able to tow. A more attractive option, however, may be the new H3, which has the same Hummer styling but a more manageable — for some — 4,700-pound curb weight.

Hyundai dropped the Santa Fe from the 2005 list but added the all-new front-wheel-drive Tucson, a small SUV. Jeep added the Wrangler Unlimited during 2004, which is an extended version of the extremely popular Wrangler with 10 more inches of wheelbase and 15 inches more length overall. New for 2005 is the Liberty CRD. This vehicle is equipped with an inline four-cylinder turbocharged 2.8-liter diesel engine that is said to give up to 32 percent better fuel economy than a comparable gas-powered Liberty. FMCA members with diesel pushers might appreciate the convenience of filling both vehicles from the same pump.

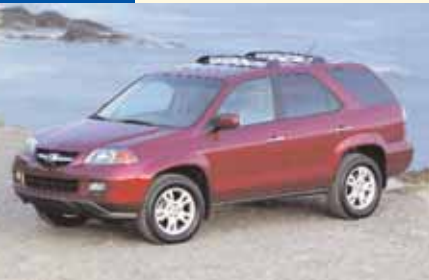
The listing for Saturn may look similar to last year's but it includes several changes. ION and VUE I-4 vehicles equipped with both automatic and manual transmissions are now towable. Also, the L-300 will make its last go-around in 2005, cutting the last tie to the original Saturns. A final production run of manual-transmission L-300s was made before the plant was converted to support other manufacturing. Scion, which debuted on the 2004 list with the xA and xB, has added the tC to its 2005 lineup. Suzuki now includes the all-wheel-drive version of its Aerio SX on the list of towables, while Toyota has included the four-wheel-drive RAV4.

Several Hondas remain on the list for 2005: four Element models, two Pilots, and three CR-V models. The Acura MDX also remains on the list. The owners manuals for Honda vehicles not on the list still advise against towing at more than 35 mph or for more than 50 miles. However, Honda officials note that this recommendation exists primarily because the company has not conducted formal towing tests of its cars at higher speeds or for greater distances. Honda officials have indicated that they are not aware of any problems caused by towing a Honda automobile with either manual or automatic transmission as long

*continued*



Isuzu Ascender 7-passenger



Acura MDX



Subaru Legacy



Pontiac Sunfire



Jeep Wrangler

as proper towing preparations are made and the vehicle is towed at legal highway speeds. Instructions for towing are available in the Owner Link section of Honda's Web site — [www.honda.com](http://www.honda.com) — and should be available from a Honda dealer or by calling Honda at (800) 999-1009.

*Family Motor Coaching* magazine's most recent survey indicates that approximately 80 percent of FMCA members tow vehicles behind their motorhomes. While some members use a trailer or a tow dolly, the majority flat tow — that is, the towed vehicle has all four wheels on the ground with a tow bar connecting it to the motorhome.

Before purchasing a vehicle that you intend to tow four wheels down, always consult the vehicle's owners manual for specific guidelines regarding the towing procedures, necessary modifications, and safety issues pertaining to the particular vehicle. This information often is listed in the owners manual under a heading such as "Recreational Towing." Keep in mind that while a manufacturer may say a certain vehicle can be towed without significant modifications, that which is not significant to one person may be burdensome to another.

Also, make sure to find out from the dealer, manufacturer, and/or the owners manual how towing will affect the vehicle's warranty. At the same time, ask the dealer representative whether any service bulletins have been released that relate to towing the vehicle behind a motorhome. Make sure the person with whom you are speaking realizes that you are talking about towing the vehicle and not using it *to tow* a trailer. Also, when reading information in the owners manual, do not confuse recreational towing with emergency towing. Some vehicles can be towed four wheels down for emergency purposes only.

Before purchasing a towed vehicle, weigh it if possible. The following list includes approximate curb weights as supplied by the manufacturers; however, optional equipment and accessories undoubtedly will increase the weight of the vehicle. It is also a good idea to weigh your motorhome (see "Weight And Tire Safety," September 2003, page 90). Because of overloading issues, some motorhomes should not tow anything. In fact, certain motorhomes may need to have their loads lightened before being driven solo.

Also, consult your motorhome's owners manual for requirements and information regarding the use of auxiliary braking systems on the towed vehicle. Some chassis, motorhome, and automobile manufacturers recommend that supplemental brakes be used on any towed vehicle. Not all jurisdictions mandate supplemental brakes on towed vehicles, but the laws of physics always apply. It is hoped that few drivers would consider towing a load of bricks on a trailer that was not equipped with brakes, but some people tow a 3,000-pound vehicle without supplemental brakes. Of course, the brakes on the motorhome cannot tell the difference between 3,000 pounds of bricks and 3,000 pounds of vehicle. Most of us have never heard a driver say the brakes on a vehicle stop it too quickly. Nevertheless, many of us have seen what happens when brakes don't work quickly enough.

The most important issue we face as we operate our coaches is safety. That means that only knowledgeable, qualified, and experienced personnel should do the initial installation of the towing equipment. After installation, it's imperative that all equipment be checked frequently and used only in the manner for which it was designed.

As with other mechanical gear, proper maintenance can increase the lifetime of towing equipment. However, there comes a time when the equipment must be replaced to prevent a dangerous situation. Frequent inspections will alert you to the need.

When hooking up your towed vehicle, do not let yourself be distracted. We've all heard stories of someone who had a weld break or who forgot to connect safety chains but was fortunate enough that nothing bad happened. Others were not so lucky, and they know that the personal and financial costs of a towing mishap can be enormous.

There is no single best way or best vehicle to tow. Each vehicle and each method has advantages and disadvantages. If a vehicle you already own or wish to purchase cannot be flat towed, it may be possible to tow it on a dolly or trailer or have adaptations made to the vehicle to make it towable.



## Remco: The Towing Experts

Since 1978 Remco Manufacturing has provided information and products used to modify vehicles for flat towing that are not approved for recreational towing by their manufacturers. If you have a vehicle that you enjoy driving but it is not approved for towing, the staff at Remco can tell you whether the vehicle is towable and what modifications are required to do so. Here is a list of the products the company offers.

- The Drive Shaft Coupling is the answer for rear-wheel-drive vehicles with automatic transmissions. As the name indicates, it disconnects the driveshaft at the rear U-joint and is controlled by a heavy-duty cable. Simply pull the cable handle — much like an old-time choke cable — and disengage the steering wheel lock and you're ready to tow. To re-engage the driveshaft, simply push in the cable handle.

- The Lube Pump is used to prevent transmission damage from occurring on front-wheel-drive vehicles equipped with automatic transmissions. When a vehicle with an automatic transmission is driven, the transmission is lubricated by an engine-driven fluid pump. When the vehicle is towed, this pump does not operate. The Lube Pump provides a reliable lubrication system for the transmission while it is being towed. The pump is wired to the motorhome and powered by the coach's electrical system, so it will not drain the battery in the towed vehicle.

- The Axle-Lock disconnects the automatic transaxle for towing a front-wheel-drive vehicle. Simply twist the Axle-Lock housing to the unlock position and you are ready to tow. There's no wear and tear on the driveline and no mileage accumulation on the vehicle's odometer.

For more information, contact Remco at (800) 228-2481 or visit [www.remcotowing.com](http://www.remcotowing.com).

	Transmission		Drive Configuration	Speed/Distance Limits (mph/mi.)	Approx. Curb Weight (lbs.)
	Auto	Manual			
<b>MDX</b>	■	N/A	Four-wheel drive	65/None	4,471

### ACURA

	Transmission		Drive Configuration	Speed/Distance Limits (mph/mi.)	Approx. Curb Weight (lbs.)
	Auto	Manual			
<b>Avalanche 4x4*</b>	■	N/A	Four-wheel drive	None	5,678
<b>Aveo</b>	■	■	Front-wheel drive	None	2,370
<b>Blazer 4x2**</b>	■	■	Rear-wheel drive	None	3,591
<b>Blazer 4x4**</b>	■	■	Four-wheel drive	None	3,866
<b>Cavalier</b>	■	■	Front-wheel drive	None	2,676
<b>Cobalt</b>	■	■	Front-wheel drive	None	2,989
<b>Colorado 4x4</b>	■	■	Four-wheel drive	None	4,093
<b>Malibu</b>	■	N/A	Front-wheel drive	None	3,174
<b>Malibu Maxx</b>	■	N/A	Front-wheel drive	None	3,458
<b>Silverado 4x4*</b>	■	■	Four-wheel drive	None	4,523
<b>Suburban 4x4*</b>	■	N/A	Four-wheel drive	None	5,219
<b>Tahoe 4x4*</b>	■	N/A	Four-wheel drive	None	5,050
<b>TrailBlazer 4x2**</b>	■	N/A	Rear-wheel drive	None	4,417
<b>TrailBlazer 4x4**</b>	■	N/A	Four-wheel drive	None	4,594

\* Must have four-wheel-drive transfer case; not all-wheel drive or two-wheel-drive.  
 \*\* Must have the AutoTrack transmission.

### CHEVROLET

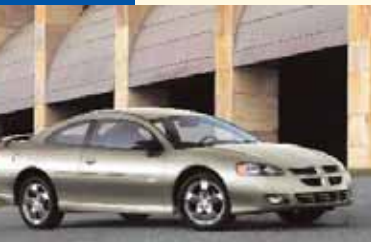


Chevrolet Cobalt

	Transmission		Drive Configuration	Speed/Distance Limits (mph/mi.)	Approx. Curb Weight (lbs.)
	Auto	Manual			
<b>PT Cruiser/Limited/Touring/GT</b>	■		Front-wheel drive	None	3,101
<b>PT Cruiser Convertible</b>	■		Front-wheel drive	None	3,303

### CHRYSLER

## DODGE

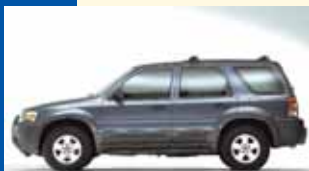


Dodge Stratus Coupe

	Transmission		Drive Configuration	Speed/Distance Limits (mph/mi.)	Approx. Curb Weight (lbs.)
	Auto	Manual			
<b>Dakota 4x4</b>	■	■	Four-wheel drive	None	4,463
<b>Durango 4x4*</b>	■	N/A	Four-wheel drive	None	5,024
<b>Neon</b>		■	Front-wheel drive	None	2,581
<b>Ram 1500 4x4</b>	■	■	Four-wheel drive	None	4,905
<b>Ram 2500 4x4</b>	■	■	Four-wheel drive	None	5,869
<b>Ram 3500 4x4</b>	■	■	Four-wheel drive	None	6,750
<b>SRT-4</b>		■	Front-wheel drive	65/None	2,900
<b>Stratus Coupe</b>		■	Front-wheel drive	None	3,051

\*Only Durangos equipped with the two-speed transfer case that has a neutral position can be towed four wheels down. The two-speed transfer case is optional on Durangos equipped with a 4.7-liter V8; it is standard on Durangos equipped with the 5.7-liter HEMI V8.

## FORD



Ford Escape

	Transmission		Drive Configuration	Speed/Distance Limits (mph/mi.)	Approx. Curb Weight (lbs.)
	Auto	Manual			
<b>Escape 4x2</b>		■	Front-wheel drive	None	3,176
<b>Explorer four-door 4x4*</b>	■	N/A	Four-wheel drive	None	4,301
<b>Explorer Sport Trac 4x4**</b>	■	N/A	Rear-wheel drive	None	4,349
<b>Ranger 4x2</b>		■	Rear-wheel drive	55/None	3,010
<b>Ranger 4x4</b>		■	Four-wheel drive	55/None	3,456
<b>F-150 4x4***</b>	■	N/A	Four-wheel drive	None	5,004
<b>F-250/350 Super Duty 4x4***</b>	■	■	Four-wheel drive	None	6,114

\*With dealer-installed Neutral Tow Kit (part #1L2J-7H332-AC).

\*\*With dealer-installed Neutral Tow Kit (part #3L2J-7H332-AA).

\*\*\*Manual transfer case only. (F-150: Requires that the center disconnect be locked out by capping off one of the front axle vacuum motor lines.)

## GMC

	Transmission		Drive Configuration	Speed/Distance Limits (mph/mi.)	Approx. Curb Weight (lbs.)
	Auto	Manual			
<b>Canyon 4x4</b>	■	■	Four-wheel drive	None	3,895
<b>Envoy 4x4</b>	■	N/A	Four-wheel drive	None	4,594
<b>Envoy XL 4x4</b>	■	N/A	Four-wheel drive	None	4,954
<b>Envoy XUV 4x4</b>	■	N/A	Four-wheel drive	None	5,097
<b>Sierra 1500 4x4</b>	■	■	Four-wheel drive	None	5,834
<b>Sierra 2500 4x4</b>	■	■	Four-wheel drive	None	6,049
<b>Sierra 3500 4x4</b>	■	■	Four-wheel drive	None	6,094
<b>Yukon 4x4</b>	■	N/A	Four-wheel drive	None	5,192
<b>Yukon XL 4x4</b>	■	N/A	Four-wheel drive	None	6,073



Chrysler PT Cruiser



Saab 9-5 Sport Wagon

## HONDA

	Transmission		Drive Configuration	Speed/Distance Limits (mph/mi.)	Approx. Curb Weight (lbs.)
	Auto	Manual			
<b>CR-V 4x2 LX</b>	■	N/A	Front-wheel drive	65/None*	3,201
<b>CR-V 4x4 LX, EX</b>	■	■	Four-wheel drive	65/None*	3,258
<b>Element 4x2 LX, EX</b>	■	■	Front-wheel drive	65/None*	3,352
<b>Element 4x4 LX, EX</b>	■	■	Four-wheel drive	65/None*	3,489
<b>Pilot LX, EX</b>	■	N/A	Four-wheel drive	65/None*	4,416

\*Run the engine for at least three minutes after every eight hours of towing before towing again.



Honda CR-V EX

## HUMMER

	Transmission		Drive Configuration	Speed/Distance Limits (mph/mi.)	Approx. Curb Weight (lbs.)
	Auto	Manual			
<b>2006 H1 Alpha</b>	■	N/A	Four-wheel drive	None	7,608
<b>H2/H2 SUT</b>	■	N/A	Four-wheel drive	None	6,400
<b>2006 H3</b>	■	■	Four-wheel drive	None	4,700

## HYUNDAI

	Transmission		Drive Configuration	Speed/Distance Limits (mph/mi.)	Approx. Curb Weight (lbs.)
	Auto	Manual			
<b>Accent</b>		■	Front-wheel drive	None*	2,280
<b>Elantra</b>		■	Front-wheel drive	None*	2,635
<b>Tiburon GS/GT/SE</b>		■	Front-wheel drive	None*	2,986
<b>Tucson 4x2</b>		■	Front-wheel drive	None*	3,240

\*After towing it is recommended the vehicle be driven briefly before towing again.



Hyundai Tucson 4x2

## INFINITI

	Transmission		Drive Configuration	Speed/Distance Limits (mph/mi.)	Approx. Curb Weight (lbs.)
	Auto	Manual			
<b>G35 Coupe/Sedan 6MT</b>		■	Rear-wheel drive	60/500*	3,500

\*After towing 500 miles, idle the engine in "neutral" for several minutes to circulate the fluids.

## ISUZU

	Transmission		Drive Configuration	Speed/Distance Limits (mph/mi.)	Approx. Curb Weight (lbs.)
	Auto	Manual			
<b>Ascender 7-passenger</b>	■	N/A	Four-wheel drive	None	4,954
<b>Ascender 5-passenger</b>	■	N/A	Four-wheel drive	None	4,594

## JEEP

	Transmission		Drive Configuration	Speed/Distance Limits (mph/mi.)	Approx. Curb Weight (lbs.)
	Auto	Manual			
<b>Grand Cherokee V8 4x4</b>	■	N/A	Four-wheel drive	None	4,482
<b>Liberty 4x4</b>	■	N/A	Four-wheel drive	None	3,957
<b>Liberty CRD 4x4 (diesel)</b>	■	N/A	Four-wheel drive	None	4,230
<b>Wrangler SE I-4 4x4</b>	N/A	■	Four-wheel drive	None	3,200
<b>Wrangler I-6 4x4</b>	■	■	Four-wheel drive	None	3,797
<b>Wrangler Unlimited I-6 4x4</b>	■	■	Four-wheel drive	None	3,684

## KIA



Kia Sorento

	Transmission		Drive Configuration	Speed/Distance Limits (mph/mi.)	Approx. Curb Weight (lbs.)
	Auto	Manual			
<b>Sorento 4x2</b>		■	Rear-wheel drive	55/400*	4,112
<b>Sorento 4x4</b>		■	Four-wheel drive	55/400*	4,306

\*Idle the engine for several minutes after every 400 miles of towing.

## LAND ROVER

	Transmission		Drive Configuration	Speed/Distance Limits (mph/mi.)	Approx. Curb Weight (lbs.)
	Auto	Manual			
<b>Range Rover HSE*</b>	■	N/A	Permanent 4WD	None	5,666

\*Follow the Towing on Four Wheels instructions in the owners manual.

## MAZDA



Mazda Tribute i

	Transmission		Drive Configuration	Speed/Distance Limits (mph/mi.)	Approx. Curb Weight (lbs.)
	Auto	Manual			
<b>B2300 Regular Cab</b>		■	Rear-wheel drive	55/None	2,994
<b>B3000 Regular Cab</b>		■	Rear-wheel drive	55/None	3,270
<b>B3000 Cab Plus 4 Door</b>		■	Rear-wheel drive	55/None	3,422
<b>B4000 4x4</b>		■	Four-wheel drive	55/None	3,683
<b>Tribute i 4x2</b>		■	Front-wheel drive	55/None	3,181
<b>Tribute i 4x4</b>		■	Four-wheel drive	55/None	3,346

## MITSUBISHI



Mitsubishi Outlander

	Transmission		Drive Configuration	Speed/Distance Limits (mph/mi.)	Approx. Curb Weight (lbs.)
	Auto	Manual			
<b>Eclipse</b>		■	Front-wheel drive	None	2,965
<b>Lancer</b>		■	Front-wheel drive	None	2,656
<b>Outlander</b>		■	Front-wheel drive	None	3,241

## NISSAN

	Transmission		Drive Configuration	Speed/Distance Limits (mph/mi.)	Approx. Curb Weight (lbs.)
	Auto	Manual			
<b>350Z</b>		■	Rear-wheel drive	60/500*	3,200
<b>Altima</b>		■	Front-wheel drive	60/500*	3,100
<b>Frontier 4x2</b>		■	Rear-wheel drive	60/500*	4,000
<b>Frontier 4x4</b>		■	Four-wheel drive	60/500*	4,200
<b>Maxima</b>		■	Front-wheel drive	60/500*	3,450
<b>Sentra</b>		■	Front-wheel drive	60/500*	2,600
<b>Xterra 4x2</b>		■	Rear-wheel drive	60/500*	4,100
<b>Xterra 4x4</b>		■	Four-wheel drive	60/500*	4,300

\*All Nissan vehicles: After towing 500 miles, idle the engine in "neutral" for several minutes to circulate the fluids.



Nissan Maxima

## PONTIAC

	Transmission		Drive Configuration	Speed/Distance Limits (mph/mi.)	Approx. Curb Weight (lbs.)
	Auto	Manual			
<b>Sunfire</b>	■	■	Front-wheel drive	65/None	2,771

## SAAB

	Transmission		Drive Configuration	Speed/Distance Limits (mph/mi.)	Approx. Curb Weight (lbs.)
	Auto	Manual			
<b>9-3 Convertible/Sport Sedan</b>		■	Front-wheel drive	None	3,170
<b>9-5 Sedan/Sport Wagon</b>		■	Front-wheel drive	None	3,370

## SATURN

	Transmission		Drive Configuration	Speed/Distance Limits (mph/mi.)	Approx. Curb Weight (lbs.)
	Auto	Manual			
<b>L-300 Sedan/Wagon</b>	■	N/A	Front-wheel drive	65/None	3,197
<b>ION Sedan/Quad Coupe*</b>	■	■	Front-wheel drive	65/None	2,751
<b>VUE with I-4</b>	■	■	Front-wheel drive	65/None	3,207
<b>VUE with V-6*</b>	■	N/A	All-wheel drive	65/None	3,630
<b>VUE with V-6*</b>	■	N/A	Front-wheel drive	65/None	3,478

\* Flat towing of ION Red Line and VUE Red Line models is not recommended due to damage that could result to the front fascia of the vehicles.



Saturn ION

## SCION

	Transmission		Drive Configuration	Speed/Distance Limits (mph/mi.)	Approx. Curb Weight (lbs.)
	Auto	Manual			
<b>xA</b>		■	Front-wheel drive	None*	2,340
<b>xB</b>		■	Front-wheel drive	None*	2,395
<b>tC</b>		■	Front-wheel drive	None*	2,955

\*After towing, allow the engine to idle for three minutes before driving the vehicle.



Scion tC



## SUBARU

	Transmission		Drive Configuration	Speed/Distance Limits (mph/mi.)	Approx. Curb Weight (lbs.)
	Auto	Manual			
<b>Baja/Baja Sport</b>		■	All-wheel drive	None	3,480
<b>Baja Turbo</b>		■	All-wheel drive	None	3,610
<b>Forester 2.5 X/XS/XT/XS Premium</b>		■	All-wheel drive	None	3,090
<b>Impreza 2.5 RS Sedan/Wagon</b>		■	All-wheel drive	None	2,972
<b>Impreza Outback Sport</b>		■	All-wheel drive	None	3,058
<b>Impreza WRX Sedan/Sport Wagon</b>		■	All-wheel drive	None	3,085
<b>Legacy 2.5i Sedan</b>		■	All-wheel drive	None	3,200
<b>Legacy 2.5i Wagon</b>		■	All-wheel drive	None	3,225
<b>Legacy 2.5 GT Sedan</b>		■	All-wheel drive	None	3,300
<b>Legacy 2.5 GT Wagon</b>		■	All-wheel drive	None	3,355
<b>Outback 2.5i Wagon/Limited</b>		■	All-wheel drive	None	3,310
<b>Outback Sport 2.5XT (Turbo) Wagon</b>		■	All-wheel drive	None	3,415

## SUZUKI

	Transmission		Drive Configuration	Speed/Distance Limits (mph/mi.)	Approx. Curb Weight (lbs.)
	Auto	Manual			
<b>Aerio SX</b>		■	Front-wheel drive	55/None	2,698
<b>Aerio SX</b>		■	All-wheel drive	55/None	2,698
<b>Aerio Sedan</b>		■	Front-wheel drive	55/None	2,661
<b>Grand Vitara</b>	■	■	Four-wheel drive	55/200*	3,230
<b>XL-7</b>	■	■	Four-wheel drive	55/200*	3,704

\*Stop towing after 200 miles and follow the manufacturer's instructions to circulate the oil in the transfer case and/or transmission.

## TOYOTA



Toyota RAV4

	Transmission		Drive Configuration	Speed/Distance Limits (mph/mi.)	Approx. Curb Weight (lbs.)
	Auto	Manual			
<b>Camry</b>		■	Front-wheel drive	None*	3,086
<b>Camry Solara</b>		■	Front-wheel drive	None*	3,175
<b>Celica</b>		■	Front-wheel drive	None*	2,425
<b>Corolla</b>		■	Front-wheel drive	None*	2,502
<b>Echo</b>		■	Front-wheel drive	None*	2,035
<b>Matrix</b>		■	Front-wheel drive	None*	2,679
<b>MR2 Spyder</b>		■	Rear-wheel drive	None*	2,250
<b>RAV4 2WD</b>		■	Front-wheel drive	None*	2,897
<b>RAV4 4WD</b>		■	Four-wheel drive	55/200*	3,230

\*After towing, allow the engine to idle for three minutes before driving the vehicle.