

**TOWABLES
FOR
2004**



Hyundai Santa Fe



Jeep Grand Cherokee



Infiniti G35 Sport Sedan



Mazda B-Series



Scion xB

A guide to 2004-model-year vehicles that manufacturers have indicated can be recreationally towed behind motorhomes without significant modifications.

The following information is intended to help motorhome owners select a vehicle that is approved by its manufacturer for flat towing. The information was gathered from automobile manufacturers and owners manuals and pertains only to model-year 2004 vehicles. The information may or may not be correct for earlier or later models. While every attempt has been made to present accurate information, keep in mind that continued vehicle improvements and production-line changes could alter the information and render it out-of-date.

The list of model-year 2004 vehicles that can be towed four wheels down has not changed significantly from that published for 2003 vehicles, but there are several additions that should be noted.

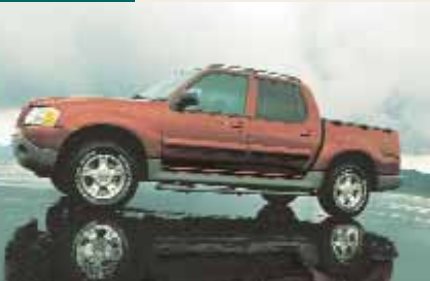
First, you will notice the addition of two manufacturers that had not appeared on the list before: Saab and Scion. All Saab 9-3 series and 9-5 series automobiles equipped with manual transmissions can be towed flat. Scion is a new manufacturer in the Toyota family that offers the xA four-door car, which looks very much like the Toyota Matrix, and the xB wagon, which bears a resemblance to the Honda Element. Both front-wheel-drive vehicles can be flat towed when equipped with a manual transmission.

Other vehicles debuting on this year's list include Chevrolet's new small four-wheel-drive Colorado pickup truck; the S-10 midsize pickup; and the new Malibu Maxx, a wagon-type version of the Malibu car. Isuzu has added the Ascender five-passenger SUV to go along with the seven-passenger model that appeared last year, and Land Rover has included the all-wheel-drive Freelander on the list this year, joining the four-wheel-drive Range Rover and Discovery models.

Saturn reversed course a bit this year by adding an automatic-transmission version of the VUE, which previously was offered with either a manual transmission or a variable-speed automatic transmission. VUE models equipped with V-6 engines and five-speed automatic transmissions are available with either all-wheel drive or front-wheel drive and are approved to be towed four wheels down.

While Honda added two vehicles to the list in 2003 — the Element and Pilot — to go along with the CR-V, owners manuals for other Honda vehicles not on the list still advise against towing at more than 35 mph or for more than 50 miles. However, Honda officials note that this recommendation exists primarily because the company has not conducted formal towing tests of its cars at higher speeds or for greater distances. Honda officials have indicated that they are not aware of any problems caused by towing a Honda automobile with

continued



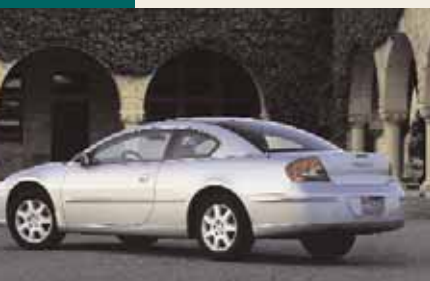
Ford Explorer Sport Trac



Saab 9-3 Sport Sedan



Honda Pilot



Chrysler Sebring Coupe



Nissan Xterra

either manual or automatic transmission as long as proper towing preparations are made and the vehicle is towed at legal highway speeds. Instructions for towing are available in the Owner Link section of Honda's Web site — www.honda.com — and should be available from a Honda dealer or by calling Honda at (800) 999-1009.

FMC's ongoing surveys indicate that nearly 90 percent of FMCA members tow vehicles behind their motorhomes. While some members use a trailer or a tow dolly, the vast majority flat tow — that is, the towed vehicle has all four wheels on the ground with a tow bar connecting it to the motorhome.

Before purchasing a vehicle that you intend to tow four wheels down, always consult your towed vehicle's owners manual for specific guidelines regarding the towing procedures, necessary modifications, and safety issues pertaining to the particular vehicle. This information is often listed in the owners manual under a heading such as "Recreational Towing." Keep in mind that while a manufacturer may say a certain vehicle can be towed without significant modifications, what may not be significant to one person may be burdensome to another.

Also, make sure to find out from the dealer, manufacturer, and/or the owners manual how towing will affect the vehicle's warranty. At the same time, ask the dealer representative whether any service bulletins have been released that relate to towing the vehicle behind a motorhome. Make sure the person with whom you are speaking realizes that you are talking about towing the vehicle and not using it to tow a trailer. Also, when reading information in the owners manual, do not confuse recreational towing with emergency towing. Some vehicles can be towed four wheels down for emergency purposes only.

Before purchasing a towed vehicle, weigh it if possible. The following list includes approximate curb weights as supplied by the manufacturers; however, optional equipment and accessories will undoubtedly increase the weight of the vehicle. It is also a good idea to weigh your motorhome (see "Weight And Tire Safety," September 2003, page 90). Because of overloading issues, some motorhomes should not tow anything. In fact, certain motorhomes may need to have their loads lightened before being driven solo.

Also, consult your motorhome's owners manual for requirements and information regarding the use of auxiliary braking systems on the towed vehicle. Some chassis, motorhome, and automobile manufacturers recommend that supplemental brakes be used on any towed vehicle. Not all jurisdictions mandate supplemental brakes on towed vehicles, but the laws of physics always apply. It is hoped that few drivers would consider towing a load of bricks on a trailer that was not equipped with brakes, but some people tow a 3,000-pound vehicle without supplemental brakes. Of course, the brakes on the motorhome cannot tell the difference between 3,000 pounds of bricks and 3,000 pounds of vehicle. Most of us have never heard a driver say the brakes on a vehicle stop it too quickly. Nevertheless, many of us have seen what happens when brakes don't work quickly enough.

The most important issue we face as we operate our coaches is safety. That means that only knowledgeable, qualified, and experienced personnel should do the initial installation of the towing equipment. After installation, it's imperative that all equipment be checked frequently and used only in the manner for which it was designed.

As with other mechanical gear, proper maintenance can increase the lifetime of towing equipment. However, there comes a time when the equipment must be replaced to prevent a dangerous situation. Frequent inspections will alert you to the need.

When hooking up your towed vehicle, do not let yourself be distracted. We've all heard stories of someone who had a weld break or who forgot to connect safety chains but was fortunate enough that nothing bad happened. Others were not so lucky, and they know that the personal and financial costs of a towing mishap can be enormous.

There is no single best way or best vehicle to tow. Each vehicle and each method has advantages and disadvantages. If a vehicle you already own or wish to purchase cannot be flat towed, it may be possible to tow it on a dolly or trailer or have adaptations made to the vehicle to make it towable. (See page 74 for information about Remco Manufacturing's line of modification products.)

ACURA

	Transmission		Drive Configuration	Speed/Distance Limits (mph/mi.)	Approx. Curb Weight (lbs.)
	Auto	Manual			
MDX	■	N/A	Four-wheel drive	65/None	4,451

CHEVROLET

	Transmission		Drive Configuration	Speed/Distance Limits (mph/mi.)	Approx. Curb Weight (lbs.)
	Auto	Manual			
Avalanche 4x4	■	N/A	Four-wheel drive	None	5,678
Blazer (2-door and 4-door) 4x4	■	■	Four-wheel drive	None	3,866
Cavalier	■	■	Front-wheel drive	65/None	2,617
Colorado 4x4	■	■	Four-wheel drive	None	3,603
Malibu	■	N/A	Front-wheel drive	65/None	3,051
Malibu Maxx	■	N/A	Front-wheel drive	65/None	3,458
S-10 4x4	■	N/A	Four-wheel drive	None	4,083
Silverado 4x4	■	■	Four-wheel drive	None	4,430
Suburban 4x4	■	N/A	Four-wheel drive	None	5,219
Tahoe 4x4	■	N/A	Four-wheel drive	None	5,262
Tracker 4x4	■	N/A	Four-wheel drive	50/200	2,987
TrailBlazer 4x4	■	N/A	Four-wheel drive	None	4,612



Chevrolet Colorado

CHRYSLER

	Transmission		Drive Configuration	Speed/Distance Limits (mph/mi.)	Approx. Curb Weight (lbs.)
	Auto	Manual			
PT Cruiser/Limited/Touring/GT		■	Front-wheel drive	65/None	3,101
Sebring Coupe/Limited		■	Front-wheel drive	65/None	3,064

DODGE

	Transmission		Drive Configuration	Speed/Distance Limits (mph/mi.)	Approx. Curb Weight (lbs.)
	Auto	Manual			
Dakota 4x4	■	■	Four-wheel drive	None	3,993
*Durango 4x4	■	N/A	Four-wheel drive	None	5,008
Neon SE/SXT/RT		■	Front-wheel drive	65/None	2,581
Ram 1500 4x4	■	■	Four-wheel drive	None	4,864
Ram 2500 4x4	■	■	Four-wheel drive	None	5,865
Ram 3500 4x4	■	■	Four-wheel drive	None	6,318
SRT-4		■	Front-wheel drive	65/None	2,900
Stratus Coupe SXT/RT		■	Front-wheel drive	65/None	3,051



Dodge Durango

**Only Durangos equipped with the optional low-speed transfer case that has a neutral position can be towed four wheels down. The standard 4x4 Durango is an all-wheel-drive vehicle that does not have a neutral position and cannot be towed four wheels down.*

FORD

	Transmission		Drive Configuration	Speed/Distance Limits (mph/mi.)	Approx. Curb Weight (lbs.)
	Auto	Manual			
Escape 4x2	■		Front-wheel drive	None	3,019
*Explorer four-door 4x4	■	N/A	Four-wheel drive	None	4,469
**Explorer Sport Trac 4x4	■	N/A	Rear-wheel drive	None	4,349
Focus	■		Front-wheel drive	None	2,612
Ranger 4x2	■		Rear-wheel drive	55/None	3,028
Ranger 4x4	■		Four-wheel drive	55/None	3,464
***F-150 4x4	■	N/A	Four-wheel drive	None	5,087
***F-150 Heritage 4x4	■	■	Four-wheel drive	None	3,990
***F-250/350 Super Duty 4x4	■	■	Four-wheel drive	None	5,828

*With dealer-installed Neutral Tow Kit (part #1L2J7H332-AC).

**With dealer-installed Neutral Tow Kit (part #3L2J7H332-AA).

***Manual transfer case only. (F-150: Requires that the center disconnect be locked out by capping off one of the front axle vacuum motor lines.)

GMC



GMC Envoy

	Transmission		Drive Configuration	Speed/Distance Limits (mph/mi.)	Approx. Curb Weight (lbs.)
	Auto	Manual			
Envoy 4x4	■	N/A	Four-wheel drive	None	4,616
Envoy XL 4x4	■	N/A	Four-wheel drive	None	4,968
Sierra 4x4	■	■	Four-wheel drive	None	4,439
Yukon 4x4	■	N/A	Four-wheel drive	None	5,269
Yukon XL 4x4	■	N/A	Four-wheel drive	None	5,567

HONDA

	Transmission		Drive Configuration	Speed/Distance Limits (mph/mi.)	Approx. Curb Weight (lbs.)
	Auto	Manual			
CR-V 4x2 LX	■	N/A	Front-wheel drive	65/None*	3,201
CR-V 4x4 LX, EX	■	■	Four-wheel drive	65/None*	3,258
Element 4x2 DX, EX	■	■	Front-wheel drive	65/None*	3,352
Element 4x4 DX, EX	■	■	Four-wheel drive	65/None*	3,489
Pilot LX, EX	■	N/A	Four-wheel drive	65/None*	4,416

*Run the engine for at least three minutes after every eight hours of towing before towing again.

HUMMER

	Transmission		Drive Configuration	Speed/Distance Limits (mph/mi.)	Approx. Curb Weight (lbs.)
	Auto	Manual			
H2/H2 SUT	■	N/A	Four-wheel drive	None	6,400



Hummer H2

HYUNDAI

	Transmission		Drive Configuration	Speed/Distance Limits (mph/mi.)	Approx. Curb Weight (lbs.)
	Auto	Manual			
Accent	■		Front-wheel drive	None Listed*	2,255
Elantra	■		Front-wheel drive	None Listed*	2,635
Santa Fe 4x2	■		Front-wheel drive	None Listed*	3,494
Tiburon	■		Front-wheel drive	None Listed*	2,940
Tiburon GT V6	■		Front-wheel drive	None Listed*	3,015

*After towing it is recommended the vehicle be driven briefly before towing again.

INFINITI

	Transmission		Drive Configuration	Speed/Distance Limits (mph/mi.)	Approx. Curb Weight (lbs.)
	Auto	Manual			
G35 Sport Coupe Leather 6MT	■		Rear-wheel drive	60/500*	3,435
G35 Sport Sedan Leather 6MT	■		Rear-wheel drive	60/500*	3,398

*After towing 500 miles, idle the engine in "neutral" for several minutes to circulate fluids.

ISUZU

	Transmission		Drive Configuration	Speed/Distance Limits (mph/mi.)	Approx. Curb Weight (lbs.)
	Auto	Manual			
Ascender 7-passenger	■	N/A	Four-wheel drive	None	4,967
Ascender 5-passenger	■	N/A	Four-wheel drive	None	4,612



Isuzu Ascender

JEEP

	Transmission		Drive Configuration	Speed/Distance Limits (mph/mi.)	Approx. Curb Weight (lbs.)
	Auto	Manual			
Grand Cherokee 4x4	■	N/A	Four-wheel drive	None	3,995
Liberty 4x4	■	■	Four-wheel drive	None	3,757
Wrangler 4x4	■	■	Four-wheel drive	None	3,192

LAND ROVER

	Transmission		Drive Configuration	Speed/Distance Limits (mph/mi.)	Approx. Curb Weight (lbs.)
	Auto	Manual			
Discovery	■	N/A	Permanent 4WD	None	4,576
Freelander	■	N/A	Permanent AWD	None	3,488
Range Rover	■	N/A	Permanent 4WD	None	5,379

MAZDA

	Transmission		Drive Configuration	Speed/Distance Limits (mph/mi.)	Approx. Curb Weight (lbs.)
	Auto	Manual			
B-series 4x2	■		Rear-wheel drive	55/None	3,011
B-series 4x4	■		Four-wheel drive	55/None	3,676
Tribute DX 4x2	■		Front-wheel drive	55/None	3,050
Tribute DX 4x4	■		Four-wheel drive	55/None	3,207



Saturn VUE



Land Rover Freelander

NISSAN

	Transmission		Drive Configuration	Speed/Distance Limits (mph/mi.)	Approx. Curb Weight (lbs.)
	Auto	Manual			
350Z		■	Rear-wheel drive	60/500*	3,188
Frontier 4x2		■	Rear-wheel drive	60/500*	3,204
Frontier 4x4		■	Four-wheel drive	60/500*	3,932
Xterra 4x2		■	Rear-wheel drive	60/500*	3,589
Xterra 4x4		■	Four-wheel drive	60/500*	4,046

*All Nissan vehicles: After towing 500 miles, idle the engine in "neutral" for several minutes to circulate fluids.

PONTIAC



Pontiac Grand Am

	Transmission		Drive Configuration	Speed/Distance Limits (mph/mi.)	Approx. Curb Weight (lbs.)
	Auto	Manual			
Grand Am SE	■	■	Front-wheel drive	65/None	3,066
Sunfire	■	■	Front-wheel drive	65/None	2,771

SAAB

	Transmission		Drive Configuration	Speed/Distance Limits (mph/mi.)	Approx. Curb Weight (lbs.)
	Auto	Manual			
9-3 Convertible/Sport Sedan		■	Front-wheel drive	None	3,170
9-5 Sedan/Sport Wagon		■	Front-wheel drive	None	3,370

SATURN

	Transmission		Drive Configuration	Speed/Distance Limits (mph/mi.)	Approx. Curb Weight (lbs.)
	Auto	Manual			
L-300 Sedan/Wagon	■	■	Front-wheel drive	65/None	3,057
Ion Sedan/Coupe		■	Front-wheel drive	65/None	2,690
VUE		■	Front-wheel drive	65/None	3,246
VUE with V-6	■	N/A	All-wheel drive	65/None	3,631
VUE with V-6	■	N/A	Front-wheel drive	65/None	3,478

SCION

	Transmission		Drive Configuration	Speed/Distance Limits (mph/mi.)	Approx. Curb Weight (lbs.)
	Auto	Manual			
xA		■	Front-wheel drive	None*	2,340
xB		■	Front-wheel drive	None*	2,395

*After towing, allow the engine to idle for three minutes before driving the vehicle.

SUBARU

	Transmission		Drive Configuration	Speed/Distance Limits (mph/mi.)	Approx. Curb Weight (lbs.)
	Auto	Manual			
Baja/Baja Sport		■	All-wheel drive	None	3,480
Baja Turbo		■	All-wheel drive	None	3,610
Forester 2.5 X/XS/XT/X Premium		■	All-wheel drive	None	3,090
Impreza 2.5 RS Sedan/TS Wagon		■	All-wheel drive	None	2,965
Impreza WRX Sedan/Sport Wagon		■	All-wheel drive	None	3,085
Legacy L Sedan/Wagon		■	All-wheel drive	None	3,225
Legacy 2.5 GT Sedan/Wagon		■	All-wheel drive	None	3,365
Outback Wagon/Limited		■	All-wheel drive	None	3,455
Outback Sport		■	All-wheel drive	None	3,050



Subaru Outback Wagon

SUZUKI

	Transmission		Drive Configuration	Speed/Distance Limits (mph/mi.)	Approx. Curb Weight (lbs.)
	Auto	Manual			
Aerio Sedan S/LX/SX		■	Front-wheel drive	55/None	2,676
Grand Vitara	■	■	Four-wheel drive	55/200*	3,230
Vitara V6	■	■	Four-wheel drive	55/200*	3,020
XL-7	■	■	Four-wheel drive	55/200*	3,704

*Stop towing after 200 miles and follow the manufacturer's instructions to circulate the oil in the transfer case and/or transmission.



Suzuki Vitara V6

TOYOTA

	Transmission		Drive Configuration	Speed/Distance Limits (mph/mi.)	Approx. Curb Weight (lbs.)
	Auto	Manual			
Camry		■	Front-wheel drive	None*	3,086
Camry Solara		■	Front-wheel drive	None*	3,175
Celica		■	Front-wheel drive	None*	2,425
Corolla		■	Front-wheel drive	None*	2,502
Echo		■	Front-wheel drive	None*	2,035
Matrix		■	Front-wheel drive	None*	2,679
RAV4 2WD		■	Front-wheel drive	None*	2,897

*After towing, allow the engine to idle for three minutes before driving the vehicle.



Toyota Echo