

READING DOT TIRE SIDEWALL MARKINGS

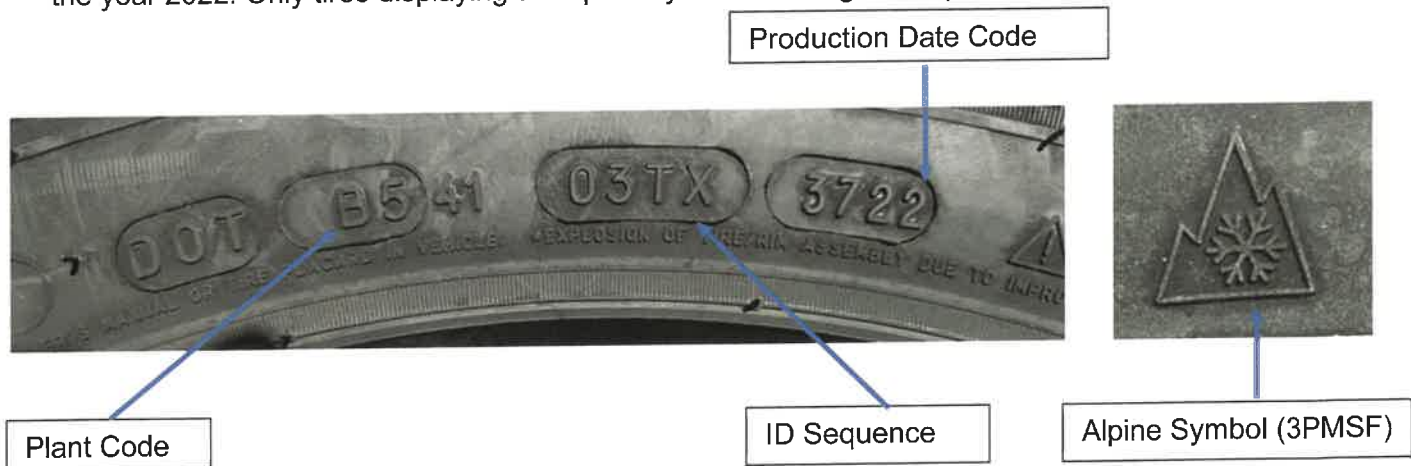
DOT tire sidewall markings serve as the tire’s fingerprint and signify compliance with applicable safety regulations. The DOT markings can be found on the sidewall just above the wheel flange.

To find out if a tire is affected by the recall:

1. Determine if it matches the information below. If the information on the sidewall of your tires does not match these identifiers, it is not part of the recall.
 - a. For the plant code identifier, it can be listed as FK or 1FK, 1B5 or B5.

CAI	MSPN	Dimension	Plant	ID Sequence	DOT Dates (WWYY)	
					Start	Stop
229142	02998	185/60 R15C	FK or 1FK	1R006X	4818	1323
822319	56761	195/75 R16C	FK or 1FK	JT027X	0918	4918
			FK or 1FK	JT02CX	4918	1523
518348	04143	205/65 R15C	FK or 1FK	PA09XX	1418	4618
			FK or 1FK	PA0ABX	4618	1323
717135	83769	205/75 R16C	FK or 1FK	JB01NX	1818	2321
			FK or 1FK	JB023X	2021	1523
715179	70411	225/75 R16C	FK or 1FK	JH02DX	2218	4918
			FK or 1FK	JH02JX	4918	1523
			B5 or 1B5	JH02JX	1722	3622
217472	09118	235/65 R16C	FK or 1FK	4107CX	1018	5018
			B5 or 1B5	4107CX	0518	1018
			FK or 1FK	4103TX	5018	1523
			B5 or 1B5	4103TX	0118	1423

2. The following illustration shows the DOT information on a sample of the affected tires. The production date code is given by the last 4 digits of the TIN code, with the first two digits specifying the week of production and the second two digits specifying the year of production. For example, the production code of “3722” in the photo below refers to the 37th DOT week of the year 2022. Only tires displaying an Alpine Symbol marking are impacted by the recall.



If you have any questions concerning the tire’s DOT information, please contact Michelin Consumer Care at 1-888-971-3801.